

# Registration

Please Print

## BMTCN® Exam Review Webinar Miami, FL | February 2, 2021

FIRST NAME	LAST	
HOME ADDRESS		
CITY	STATE	ZIP
PRIMARY PHONE		
EMPLOYER		
WORK PHONE		
TITLE	UNIT	
EMAIL		

**Tuition** (check one)

**Baptist Health - South Florida (BHSF) Employees**

☐ Complimentary

**Non-Employees**

☐ \$87.50

**Payment** ☐ CHK ☐ VISA ☐ MC ☐ DISC ☐ AMEX

Total \$ \_\_\_\_\_

ACCT# \_\_\_\_\_

EXP. DATE \_\_\_\_ / \_\_\_\_

SIGNATURE \_\_\_\_\_

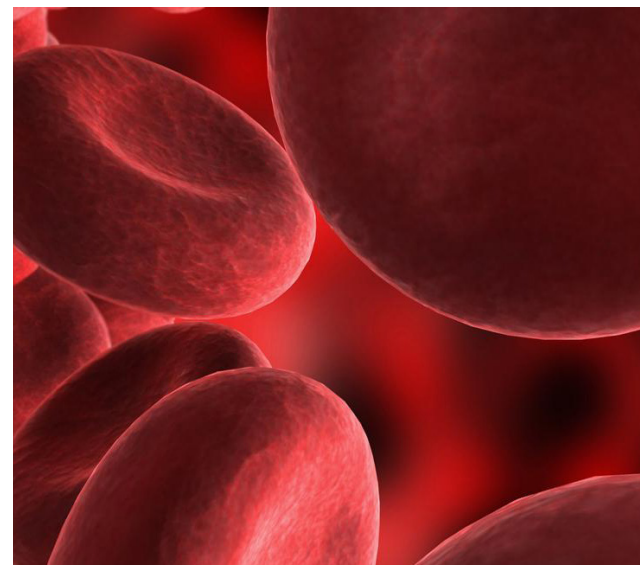
Billing Address is required for all credit card payments. Checks payable to **MED-ED (Tax ID 56-1589040)**. **Tax deductible:** All expenses for continuing education undertaken to maintain and improve professional skills are tax deductible.

**Office Use:** Date Rec'd \_\_\_\_\_ Init \_\_\_\_\_ \$ \_\_\_\_\_

CK \_\_\_\_\_ CC \_\_\_\_\_



1911 Charlotte Drive | Charlotte, NC 28203



## BMTCN® Exam Review Webinar

**Tuesday, February 2, 2021**  
Miami, FL



**Miami Cancer Institute**

BAPTIST HEALTH SOUTH FLORIDA

In conjunction  
with



## Agenda

### BMTCN® Exam Review Webinar

#### Sign-in begins at 7:30 am.

Each day includes a one-hour lunch break, as well as a morning and afternoon break of 15 minutes each. The order of lectures presented and break times may vary according to speaker preference.

#### Tuesday, February 2 8:00 am to 4:30 pm

- Introduction
- Basic Concepts and Indications for Transplantation
- Cellular Collection Methods
- Early Transplant Management and Education
- Late Transplant Management and Education
- BMT Quality-of-Life Issues
- Professional Practice Standards

## Accreditation

### RN/LPN/LVN: 7 Contact Hours Includes 1 Pharmacology Contact Hour

MED-ED, Inc. is accredited as a provider of continuing nursing education by the American Nurses Credentialing Center's Commission on Accreditation (ANCC).

MED-ED, Inc. is an approved provider by the following State Boards of Nursing: **Florida**/FBN 50-126, **Iowa**/296, **California**/#CEP10453.



## Speaker

### Elizabeth B. McGrath, DNP, APRN, ACACNP-BC, AOCNP, ACHPN

Elizabeth has served for over 35 years as an oncology nurse practitioner with extensive experience in the clinical care of patients in medical and radiation oncology. She also has extensive teaching experience in providing education to oncology nurses and providing two Oncology Certified Nurse (OCN®) review courses annually in the Northeast. Elizabeth is asked to speak regionally on various topics in oncology in her area. She also serves as an associate professor of medicine at the Geisel School of Medicine at Dartmouth, NH, an affiliate associate professor in the DNP program at Northeastern University in Boston, MA, and an adjunct faculty member in the graduate nursing program at Colby-Sawyer College in New London, NH. She serves on the educational planning committee for the regional Medical Oncology Society and is on the faculty for the Vizient Nurse Residency Program at Dartmouth.

*MED-ED reserves the right to substitute an equally qualified speaker if necessary.*

## Course Overview

This program is designed for BMT oncology nurses seeking a review course in preparation for the ONCC® Blood and Marrow Transplant Certified Nurse (BMTCN®) Exam. The review will focus on the following major concepts from the 2018 test content outline: foundations of transplant, preparative regimens, cellular collection and infusion, early and late transplant management and education, quality of life and professional performance. This is not an introductory course to transplantation, but rather a comprehensive review of BMT oncology nursing practice.

### Program Learning Outcomes

This program prepares the learner to:

- Discuss and practice test-taking skills and strategies.
- Review the basic concepts for pre- and post-transplantation.
- Identify the nurse's role in the management and care of BMT patients across the transplant trajectory.
- Discuss the clinical presentation and evidence-based interventions of common issues in BMT.
- Identify key survivorship issues in BMT and professional oncology practice.

## Registration Information

### Tuition

Includes Electronic Program Manual and CE Certificate

### Baptist Health - South Florida (BHSF)

#### Employees

Complimentary

#### Non-Employees

\$87.50

*MED-ED payment credits may not be used for this seminar.*

### HOW TO REGISTER



MedEdSeminars.net



MED-ED: 1911 CHARLOTTE DR.  
CHARLOTTE, NC 28203



800-763-3332

FAX: 704-333-5020

Cancellations received in writing up to 14 days prior to the seminar will receive a full refund. A 10% processing fee will be charged for refunds requested less than 14 days prior to the seminar. Cancellation fee will be waived for tuitions transferred to another seminar or if applied to Self-Study products. In the rare event that MED-ED must cancel, MED-ED's liability is limited to tuition.

### To Register:

<https://education.mededseminars.net/bundle/bmtcn-exam-review-live-webinar-miami-cancer-institute-020221>

### Webinar Presented Via Zoom

Webinar access information and instructions will become available following registration.

**Questions? Call MED-ED at 800-763-3332  
or visit [www.MedEdSeminars.net](http://www.MedEdSeminars.net)**