

# Registration

Please Print

## 39th Annual Current Concepts in Critical Care Webinar Albuquerque, NM | February 19, 2021

FIRST NAME LAST

HOME ADDRESS

CITY STATE ZIP

PRIMARY PHONE

EMPLOYER

EMPLOYEE ID # (REQUIRED)

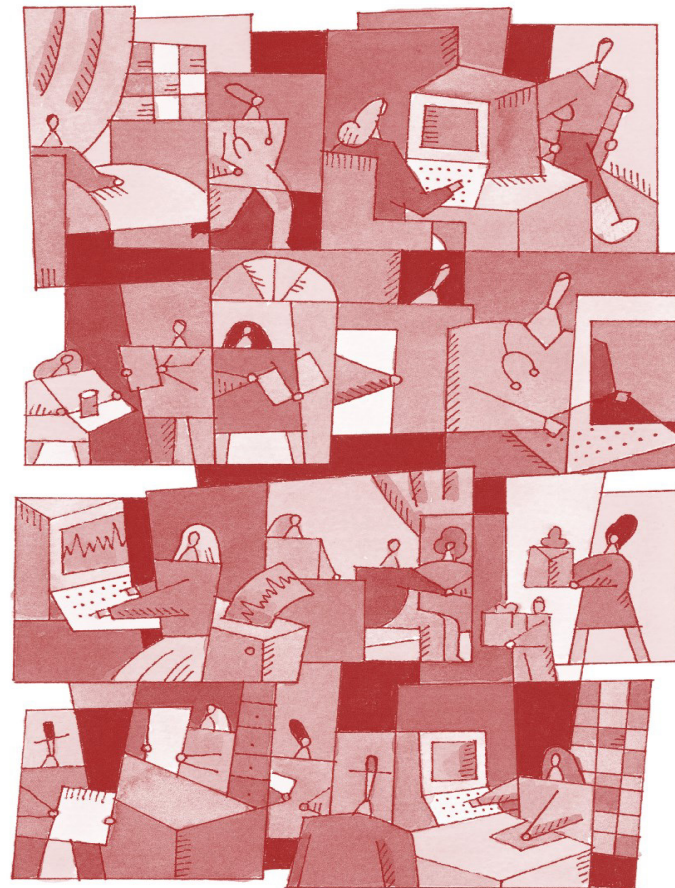
WORK PHONE

TITLE UNIT

EMAIL

### Tuition


Tuition is complimentary for the first 100 registrants.  
Registrants after that will be prompted for a \$40 payment.



## 39th Annual Current Concepts in Critical Care Webinar

Friday, February 19, 2021  
Albuquerque, NM

 **PRESBYTERIAN**

In conjunction  
with  
  
MED·ED  
Since 1983

MED·ED  
Since 1983

1911 Charlotte Drive | Charlotte, NC 28203

## Agenda

### 39th Annual Current Concepts in Critical Care Webinar

#### Sign-in begins at 7:30 am.

The day includes a morning break of 15 minutes. The order of lectures presented and break times may vary according to speaker preference.

**Friday, February 19** 8:00 am to 12:00 pm

- Introduction
- Acute Kidney Injury
- Current Identification and Treatment Modalities of Ischemic Stroke
- Use of ECMO and VADs in the Cardiopulmonary Adult
- Survive, Thrive or Prevail

## Accreditation

### RN/APRN: 3.75 Contact Hours

MED-ED, Inc. is accredited as a provider of continuing nursing education by the American Nurses Credentialing Center's Commission on Accreditation (ANCC).

MED-ED, Inc. is an approved provider by the following State Boards of Nursing: **Florida**/FBN 50-126, **Iowa**/296, **California**/#CEP10453.



## Speaker

### Mary Ann "Cammy" Christie, MSN, APRN, CCRN-CMC-CSC, PCCN



Cammy is an internationally known speaker with over 45 years of critical care experience. She has taught the CCRN® Exam Review as well as critical care updates with an emphasis on the critical thinking skills of the bedside practitioner. In addition to lecturing across the globe, Cammy is a reviewer for several revered nursing journals, has

numerous publications in the area of critical care and continues to have an active practice as an acute care nurse practitioner at the University of Florida, Division of Critical Care Medicine, Cardiothoracic Surgery. As a critical care nurse practitioner, Cammy brings many clinical practice skills to her lectures as well providing clinical pearls for bedside care.

*MED-ED reserves the right to substitute an equally qualified speaker if necessary.*

## Course Overview

This program is designed for any healthcare provider working within the critical care arena. Upon completion of this lecture, the participant will have a review of current events in critical care, what is new in neurological diagnostics for identification and treatment of ischemic stroke, acute kidney injury and critical care mortality, use of ECMO and VADs for cardiopulmonary support and conclude with a lecture on strategies dealing with the crisis in nursing.

### Program Learning Outcomes

This program prepares the learner to:

- Review the current major concerns of critical care nursing, acute kidney injury, new diagnostics in the identification and intervention of ischemic stroke, the complex concepts of the use of ECMO and VADs as well as the current outcomes in care and strategies on dealing with the crisis in critical care nursing.

## Registration Information

**Tuition** Includes Electronic Program Manual and CE Certificate

**Tuition is complimentary for the first 100 registrants. Registrants after that will be prompted for a \$40 payment.**

### To Register:

Please register on line by visiting:  
<https://phs.swoogo.com/CCCN21>

### Questions?

**Kerry McKenna-Ducharme, MSN, CCRN**  
Conference Chair  
Director of Nursing, Heart, Vascular  
and Neurosciences Programs  
Presbyterian Hospital  
[Kmckenna@phs.org](mailto:Kmckenna@phs.org)  
(505)841-1714